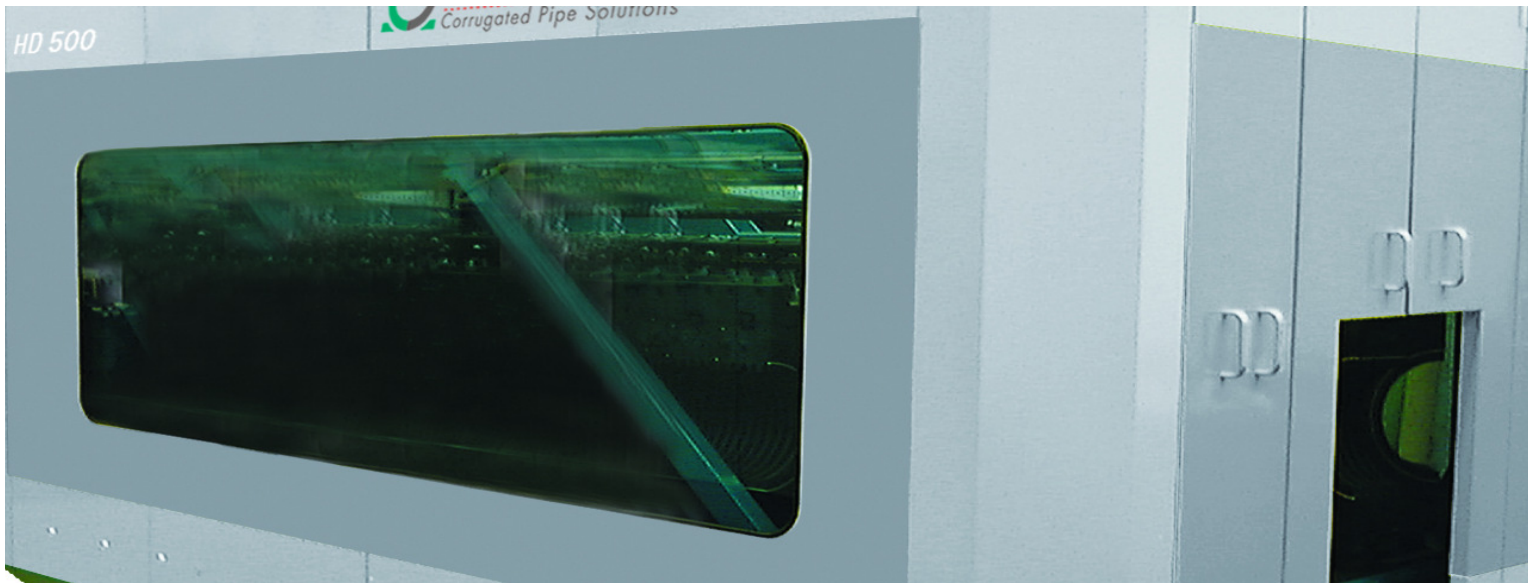
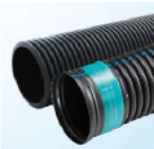
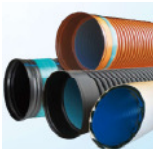
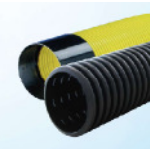


HD Series for ambitious tasks

# Drainage, Sewage, Rainwater.

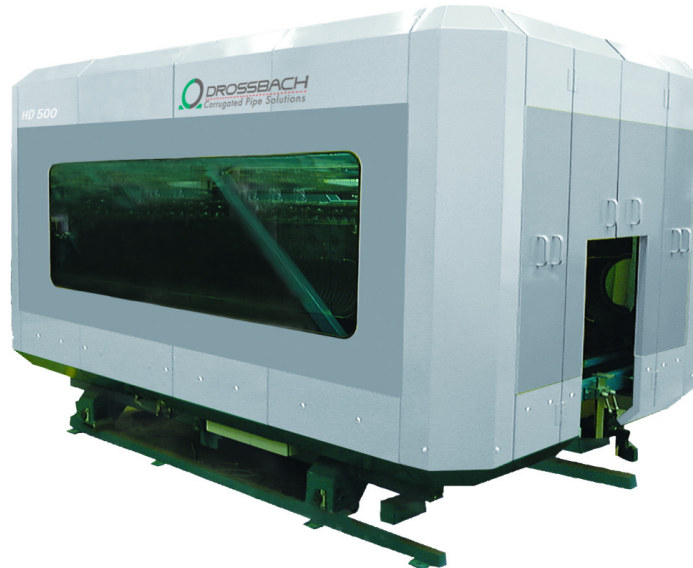


**HD 500. Technical data sheet.**



## DROSSBACH HD 500

# Superior performance for mid-sized diameters.



### Technical Characteristics HD 500:

Production of corrugated plastic pipes with high production speed of up to 9 m/ min. thanks to directly water-cooled mould blocks and an integrated full vacuum system.

Corrugated pipe machine mounted onto a solid, welded steel frame with horizontally rotating mould blocks in an open construction.

Full vacuum system for perfect profiling and wall-strengthening of corrugated pipes.

Equipped with 39 directly-cooled pairs of mould blocks for the production of pipes of 6 meter length including in-line socket.

Mould blocks made of aluminium with cast water-cooling circuit vacuum technology, characterised by low weight and excellent heat transfer properties.

Wear-free movement of mould blocks in Cassini curves

Spiral-mandrel die head for premium quality and high speed performance, assures short down-times.

Maintenance-free operation thanks to a fully automatic, centralized lubrication system.

Cooling water circulation in a closed circuit between the mould blocks and the chiller.

Simple and fast exchange of mould blocks.

With measurements from ID 150 up to ID 400 mould block inserts are compatible with the HD 1200.

Performance data	
Max. mech. production speed	9 m/min
PE/PP output	950 kg/h
Measurements/weight	
Max. pipe outer diameter (OD)	560 mm
Min. pipe internal diameter (ID)	100 mm
Number of mould blocks (per side)	39
Length	4300 mm
Width	2650 mm
Height (depending on extrusion height)	>2600 mm
Length of moulding area	2060 mm
Max. travel	2400 mm
Weight of machine without mould blocks	12000 kg

### Applications:

Drainage, Percolation  
Sewage  
Rainwater/ Storm Water  
Geothermics  
Cable Protection – flexible and rigid pipes.

### Materials:

PE, PP, PA, ABS, PVDF, EVA, PTFE,  
further plastics available upon request.